

NEW PRODUCTS



ZOELLER WASTE SYSTEMS LIMITED



Innovative New Multipurpose Recycling Vehicle

Designed and manufactured by Zoeller Waste Systems Limited the **OPTIMA** is a fully versatile multi purpose vehicle capable of various collection operations including segregated recyclate collection loaded either directly into the body or internal optional stillages, bulk waste collection, white goods, special collections, missed domestic bin collection, kerbside sortation collection and stand-in front line domestic collection. In addition waste may be removed from the body either by tipping through the specially designed swing bulkheads or off loading the optional internal galvanized stillages via the side loading doors. The **OPTIMA** may also be compartmentally reconfigured with minimal loss of operational time.

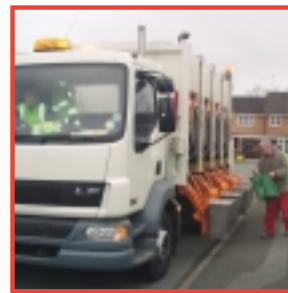
The **OPTIMA** is capable of lifting and discharging refuse from 80-360 litre bins. The top loading lightweight hydraulic side lift system allows quicker, easier and smoother operation than any other side mounted system currently available in today's market. The front two compartments are fully enclosed to keep the recyclate/waste dry and included is a 1000 kg dump over tail lift to allow safe loading of wheeled containers, bulk waste, white goods etc.

To facilitate kerbside sortation for recyclate collection 4 stainless steel additional 60 or 100 litre clip on containers are available, these can be stowed under body side when not in use.

Payload and body capacity are dependant on size of chassis specified.

Innovative features:

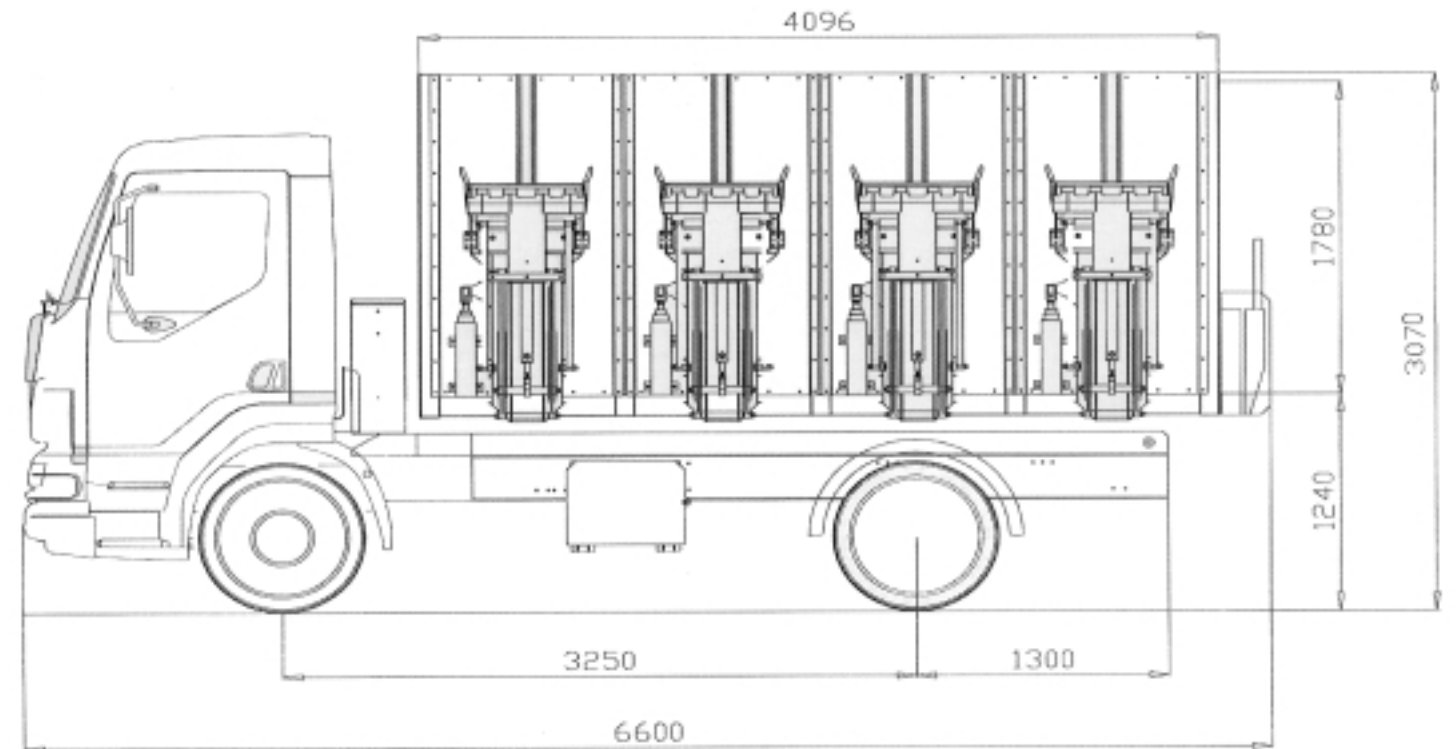
- 1 Fully versatile
- 2 Hydraulic side lift system
- 3 Adjustable compartment system
- 4 Under body tipper unit
- 5 Tail lift - 1000kg
- 6 Removable tip through bulkheads
- 7 Side loading doors
- 8 Electro hydraulic control system
- 9 Rubber lined glass stillage to reduce noise
- 10 Proven design



Multi Purpose Recycling Vehicle

OPTIMA

Type OPTIMA 4 LD15t16



Container types

| | | | | | | |
|---|-------------|--------------|-----------|-----------|----------|-------------------|
| Container range depending on model | Wheeled bin | Wheeled bin | Container | Container | Paladin | Zoeller Clip-on |
| Specification in accordance with model list | 80/120L | 140/240/360L | 500-1200L | 770-1300L | Modified | Container 60/100L |
| Special containers upon request | EN 840-1 | EN 840-1 | EN 840-2 | EN 840-3 | | |

Lifter dimensions in mm

| | | | | | | |
|-------------------------------------|------|------|-----|-----|-----|------|
| a Comb height | 900 | 900 | N/A | N/A | N/A | 900 |
| b Ground clearance lifting carriage | 1100 | 1100 | N/A | N/A | N/A | 1100 |
| c Ground clearance chassis | 650 | 650 | 650 | 650 | 650 | 650 |

Technical data

| | | | | | | |
|----------------------|-----------------|-----------|-----------|-----------|-----------|-----------|
| Cycle time* | 24 s | 24 s | 15 s | 15 s | 15 s | 26 s |
| Lifting capacities** | 100 kg | 100 kg | 1000 kg | 1000 kg | 1000 kg | 100 kg |
| Lift Type | Side lift | Side lift | Tail lift | Tail lift | Tail lift | Side lift |
| Noise level*** | 70 dB(A) | 70 dB(A) | 70 dB(A) | 70 dB(A) | 70 dB(A) | |
| Operating pressure | 100 bar | | | | | |
| Operating voltage | 24 V | | | | | |
| Payload | 6500 kg app | | | | | |
| GVW | 15000 kg | | | | | |
| Capacity | 16 Cubic metres | | | | | |

Available Options 16 Cubic metres/15000 kg/18000 kg GVW, 24 Cubic metres/18000 kg GVW
 Safety CE Machinery Directive certification

Legend

- * Min cycle time, depends on installation height, container size and oil viscosity.
- ** Lifting and tipping capacities refer to max. use of nominal container capacity with a refuse density acc. to standard.
- *** Data relating to working area w/o container.

ZOELLER WASTE SYSTEMS LTD

always moving forward

Zoeller Waste Systems Limited,
 4/5 Colemeadow Road,
 Redditch,
 B98 9PB.

Tel: (01527) 594700
 Fax: (01527) 584168
 Email: sales@zoeller.co.uk
 Website: www.zoeller.co.uk

Zoeller Waste Systems Limited • 5 Colemeadow Road • Redditch • Tel. +44 1527 594700 • Fax. +44 1527 584168

http://www.zoeller.co.uk

Technical data subject to modification without prior notice